



GADD 45γ Polyclonal Antibody

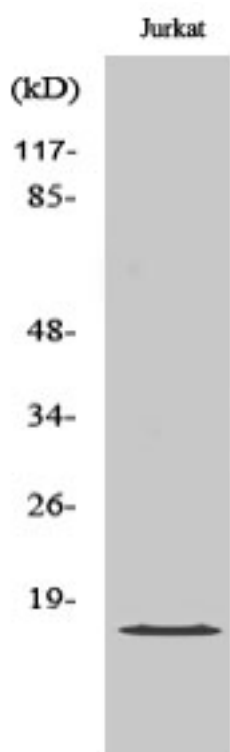
Catalog No	YP-Ab-00402
Isotype	IgG
Reactivity	Human;Mouse;Rat
Applications	WB;IHC;IF;ELISA
Gene Name	GADD45G
Protein Name	Growth arrest and DNA damage-inducible protein GADD45 gamma
Immunogen	The antiserum was produced against synthesized peptide derived from human GA45G. AA range:101-150
Specificity	GADD 45γ Polyclonal Antibody detects endogenous levels of GADD 45γ protein.
Formulation	Liquid in PBS containing 50% glycerol, 0.5% BSA and 0.02% sodium azide.
Source	Polyclonal, Rabbit,IgG
Purification	The antibody was affinity-purified from rabbit antiserum by affinity-chromatography using epitope-specific immunogen.
Dilution	Western Blot: 1/500 - 1/2000. Immunohistochemistry: 1/100 - 1/300. Immunofluorescence: 1/200 - 1/1000. ELISA: 1/5000. Not yet tested in other applications.
Concentration	1 mg/ml
Purity	≥90%
Storage Stability	-20°C/1 year
Synonyms	GADD45G; CR6; DDIT2; Growth arrest and DNA damage-inducible protein GADD45 gamma; Cytokine-responsive protein CR6; DNA damage-inducible transcript 2 protein; DDIT-2
Observed Band	19kD
Cell Pathway	nucleus,cytoplasm,
Tissue Specificity	Brain,Colon carcinoma,Lung,Placenta,
Function	function:Involved in the regulation of growth and apoptosis. Mediates activation of stress-responsive MTK1/MEKK4 MAPKKK.,similarity:Belongs to the GADD45 family.,subunit:Interacts with GADD45GIP1.,
Background	This gene is a member of a group of genes whose transcript levels are increased following stressful growth arrest conditions and treatment with DNA-damaging agents. The protein encoded by this gene responds to environmental stresses by mediating activation of the p38/JNK pathway via MTK1/MEKK4 kinase. The GADD45G is highly expressed in placenta. [provided by RefSeq, Jul 2008],
matters needing attention	Avoid repeated freezing and thawing!



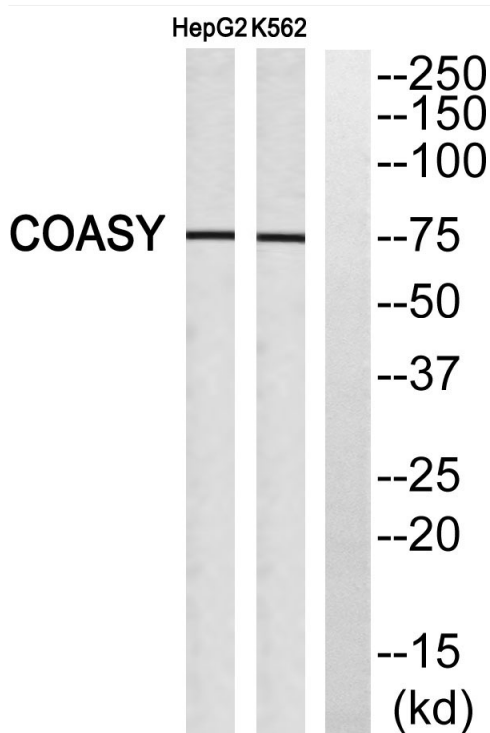
Usage suggestions

This product can be used in immunological reaction related experiments. For more information, please consult technical personnel.

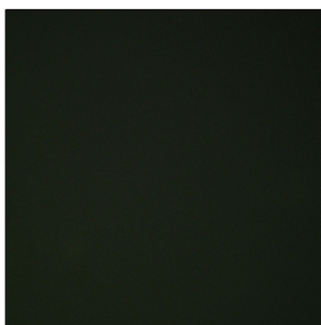
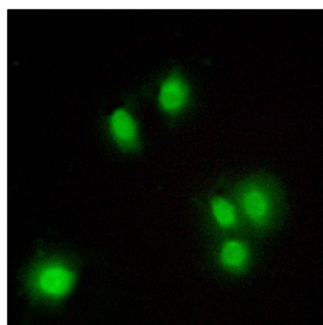
Products Images



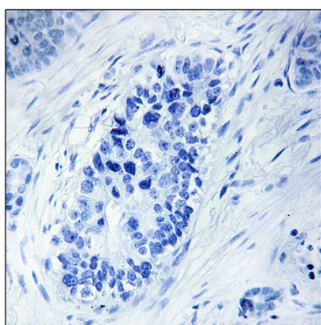
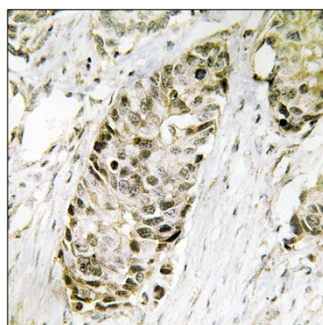
Western Blot analysis of various cells using GADD 45γ Polyclonal Antibody



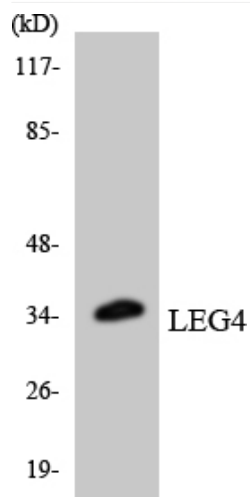
Western blot analysis of GA45G Antibody. The lane on the right is blocked with the GA45G peptide.



Immunofluorescence analysis of A549 cells, using GA45G Antibody. The picture on the right is blocked with the synthesized peptide.



Immunohistochemistry analysis of paraffin-embedded human lung carcinoma tissue, using GA45G Antibody. The picture on the right is blocked with the synthesized peptide.



Western blot analysis of the lysates from HeLa cells using LEG4 antibody.